

**Passion** – WordPress Theme Documentation.

Preview: <http://chabbu.com/preview/passion-photography-wordpress-theme/>

Created: 03/12/2013

Email: [support@chabbu.com](mailto:support@chabbu.com)

Skype: ChaBBu.Support

Web: <http://www.chabbu.com>

Google+: <https://plus.google.com/+Chabbu>

Facebook: <https://www.facebook.com/ChaBBu.Online>

---

Thank you for purchasing my template. If you have any questions that are beyond the scope of this help file, please feel free to email. Thanks so much!

**If your query is urgent please email or send me a message on Skype**

It's assumed you have all the technical skills to install WordPress and install Custom Themes for WordPress. You will find the necessary Theme files in the source directory. The zip file is called '**passion.zip**'. Please contact me via emails if you need any assistance.

**Please refer to the following documentation once Theme is successfully installed.**

---

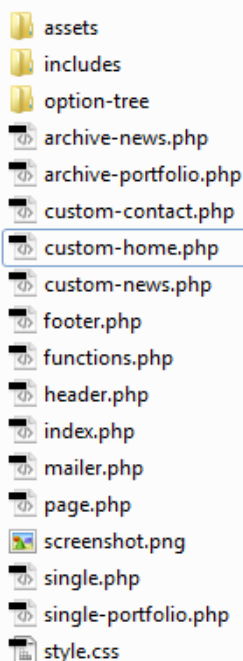
## Directory & Files Structure

**assets:** Contains all the assets used ( JavaScript, and layout images )

**includes:** Contains all PHP code for Custom Post Types, MetaBoxes, Options and additional custom code for the theme

**option-tree:** Contains core OptionTree plugin

Other pages are for custom WordPress Page Templates and Theme Parts.



- assets
- includes
- option-tree
- archive-news.php
- archive-portfolio.php
- custom-contact.php
- custom-home.php
- custom-news.php
- footer.php
- functions.php
- header.php
- index.php
- mailer.php
- page.php
- screenshot.png
- single.php
- single-portfolio.php
- style.css

## Theme Options

If you want to modify logo, phone, email and social links etc., please refer to Theme Options. You can access the section from WordPress dashboard. Find it Under **Appearance >> Theme Options**.

Passion - Minimal Photography Website Wo... + New Howdy, admin

Media  
Pages  
Slideshow  
Portfolio  
News  
Appearance  
Plugins  
Users  
Tools  
Settings

Themes  
Customize  
Menus  
Theme Options  
Editor

Version 2.1.4

Save Changes

General

Social Links

Logo

Upload or select logo for the website. Dimensions should not be bigger than ( 180x40px ).

Phone

Phone number to be displayed on the footer of the website.

Email

Email address to be displayed on the footer of the website. All emails will also be sent to the same email address from contact page form.

Footer Text

Footer text or copyright info, to be displayed on the footer of the website.

Reset Options

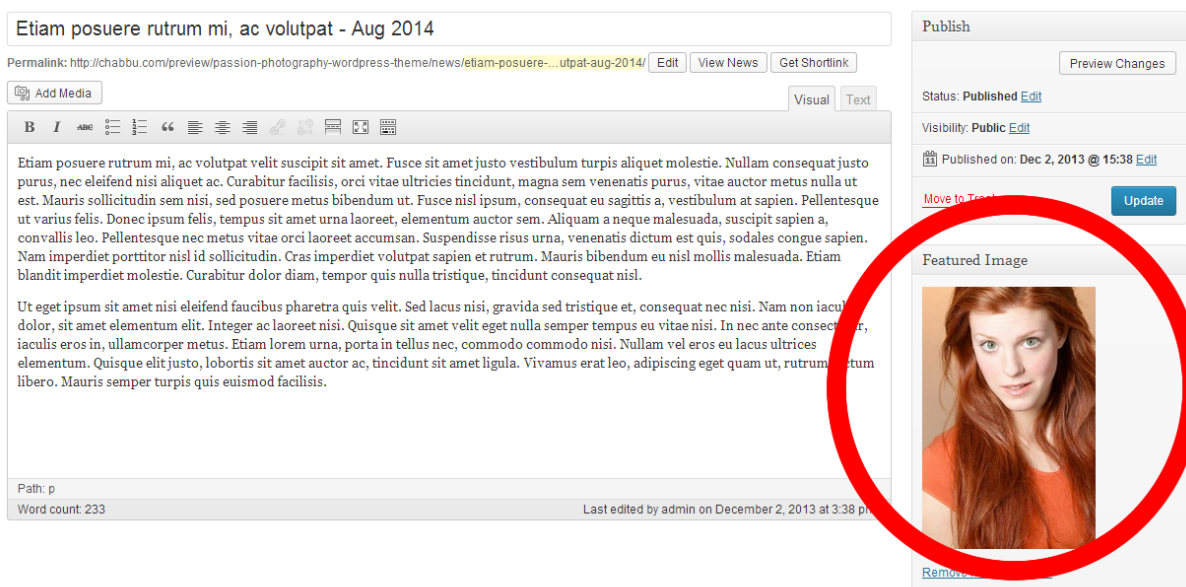
Save Changes

## Basic usage

You can modify and add contents as usual WordPress page contents. Simple create Pages, News, Slides, and Portfolio galleries. But make sure to select the right template for the pages. Each section is explained with little details below.

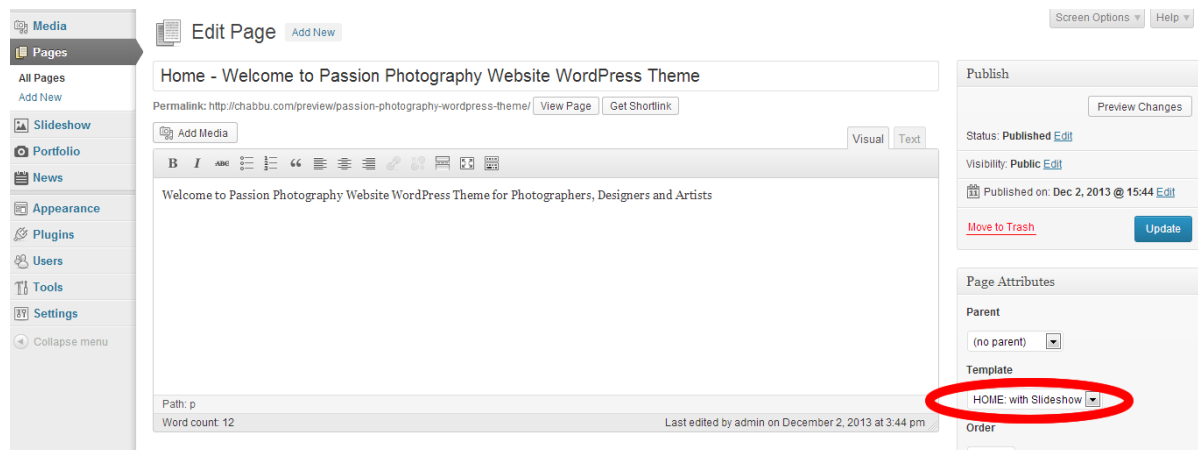
## Featured Image

Works with **Pages** and **News**. Default page template is modified to fit with the template. Simply add your text and publish your page. You can add featured image from the featured image section on the right side of the panels. Please make sure your image size for featured image is '310x410px' or WordPress will resize automatically.



## Custom Page Templates

You can access custom page template, in the edit page section of the WordPress admin area.



**custom-home.php**: Custom home page with slideshow. You can refer to it in the admin panel via Template name '**HOME: with Slideshow**'

**custom-news.php**: Custom page template to display and list all news items. You can refer to it in the admin panel via Template name '**News**' .

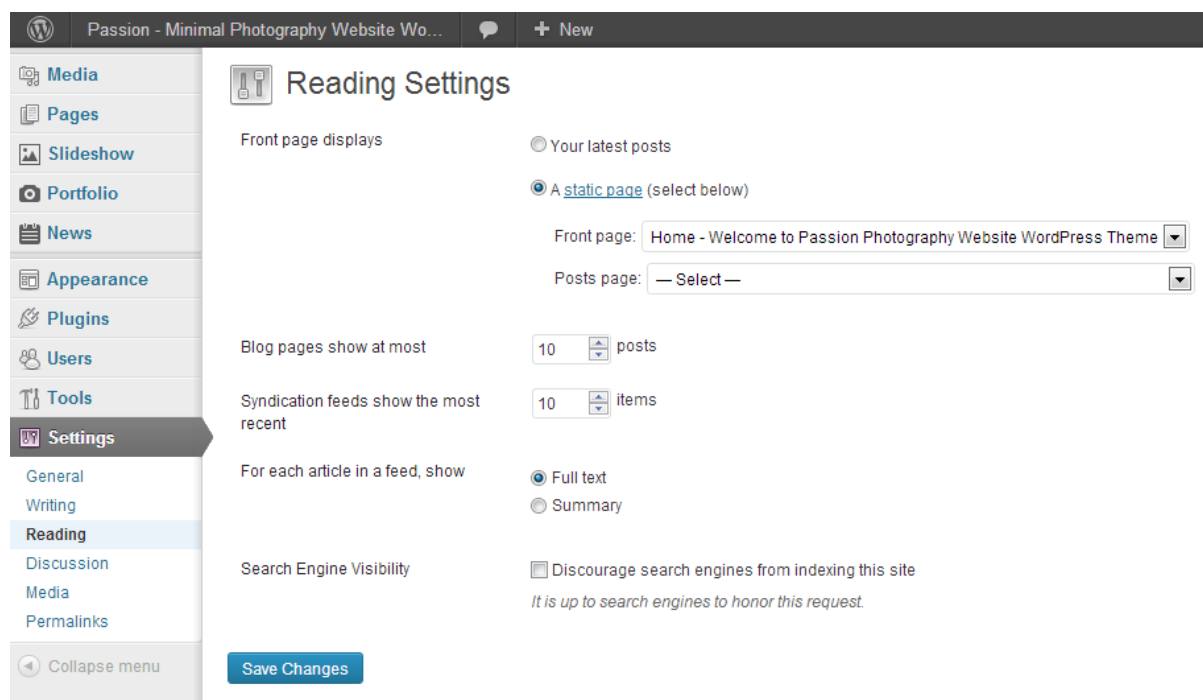
**custom-contact.php**: Custom page template for contact page, this will include contact form if you have already set email in the Theme Options. You can refer to it in the admin panel via Template name '**Contact: with Form**' .

## Home page with Slideshow

If you want to use home page as your slide show, please make sure to add some slides in the Slideshow section. All slides will be displayed by date (published), descending order. All images will be resized automatically. Just make sure your images have dimension somewhat 960x410px.

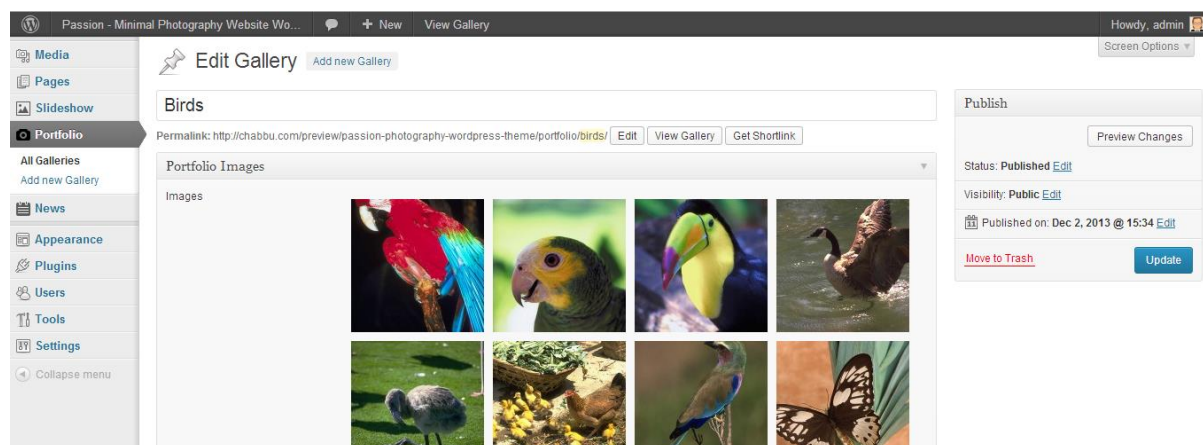
Once you have added all your slides, refer to the pages section and create an empty page but make sure to use, **HOME: with Slideshow** as your Page Template from the right hand side of the panel.

If you want to use home page as your default WordPress landing page. You will need to modify WordPress settings. Please refer to the **Settings >> Reading** from the left hand side.



## Portfolio

Please refer to the Portfolio section from the left to add new Photo Galleries. The process is straight forward. Name the gallery and simply drag and drop images you want to display in the gallery. All images will be resized automatically. Just make sure your images have a height greater than 410px.



## News Listing Page

Once you have added all your news items to the News, refer to the pages section and create an empty page but make sure to use, **News** as your Page Template from the right hand side of the panel. The new page will now display all news. You can attach a featured image as well if you want.

---

## Website Main Navigation Menu

Theme comes with a Default menu '**Main Menu**'. You can create your own menu and assign the newly created menu to the 'Main Menu'. You can do it by changing the location. The process is simply drag and drop. You can access the Menus from: **Appearance >> Menus**

**Important:** if you cannot see the Portfolio and News in the menu selection. Please make sure to check Portfolio and News in the Screen Options. You can find it on the top right corner of the screen.

